

Ngāti Mutunga o Wharekauri Iwi Trust

2013 Annual Meeting Resolutions and Election of Trustees CANDIDATE PROFILES

Special General Resolutions

In proposing these resolutions the Trust is attempting to clarify and streamline provisions for future Trustee elections. Currently the Trust Deed requires Trustee elections to be conducted by an independent Returning Officer, but has no provision for the election forms to be returned directly to the independent Returning Officer.

A report on this issue was presented to the June meeting of the Trust and is available for inspection from the Trust's website www.nmow.co.nz or by contacting the Trust Secretary on trustsecretary@nmow.co.nz.

Disclaimer: The Returning Officer of Ngāti Mutunga o Wharekauri Trust accepts no responsibility for the content or accuracy of the content contained in the statements as supplied by the candidates.

Wharekauri Trustee Candidates

ERUERA-FRASER, Melodie Michaelina

Ko Wharekauri te Moutere
Ko Rangimata te Waka
Ko Mangatukarewa te Awa
Ko Pipitarawai te Maunga
Ko Pa Tangaroa te Pa
Ko Ngati Mutunga te Iwi
Ko Melodie Taaku Ingoa
Tena Koutou, Tena Koutou, Tena Tatou
Katoa

Occupation: Manage and Drive Ritchies Buses, Cleaner and Maori Health Services

Personal Interests: Whakapapa, Sports and Family

Community Involvement: Maori Warden, Maori Committee and Norman Kirk Committee

Candidate Statement:

I am born and bred Ngati Mutunga. I am proud of who I am and have lived in the Chatham Islands for the majority of my life. I would like to thank the people who voted for me and have started a new journey which I wish to continue, as Trustee.

For me the mahi has only just started and I have interest in learning more about our Whakapapa and Kua, through the support and knowledge of all our Kaumatua.

I would like to see more of our management return to the Island and continue to improve our people's knowledge of our assets and to support the growth of our asset base.

I would like to see a unified Iwi connected through our Kaumatua, our Trust Board, and our people. Continue our Wananga, sharing knowledge, building skills and Te Reo for our future mokopuna.



PAGE, Robin

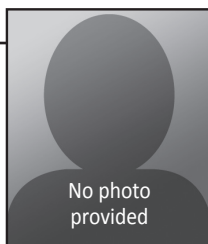
Kia ora koutou

Ko Tuta Tutere raua ko Pare Hough oku tupuna

Ko George Tokomaru Tuuta raua ko Te Amo Daymond oku tupuna

Ko Ngawhata Tuuta raua ko Howard Page oku tupuna.

Robin Page has lived on the Chatham's for 45 years apart from 5 years at Saint Bedes College, Christchurch. Diving and fishing has always been a big part of his life and he has been self-employed for 25 years. Robin has a son who he would like to



have the opportunity to continue in the fishing industry.

Robin's Board experience includes: Young Fisherman's Association, Federated Fisherman's Association, Founding Executive Member of Cramac 6, Pau Mac 4 Executive, Rock Lobster Industry Council, NMOW Iwi Trust trustee, NMOWIT AHC director and Port Nicholson Fisheries director.

Robin would welcome the opportunity to be a trustee once again. He enjoyed the last 3 years of his term being part of building iwi homes and buying into Port Nicholson Export Company, this being a purchase that will help us get further down the value chain which in turn will help us buy our quota back.

Robin sees the key to success is for Trustees to work together positively as a team, looking to the future. He also wants to see Ngati Mutunga o Wharekauri work alongside other island groups, as there is a lot more power in being united and the island will only move forward when everyone on it is pulling in the same direction.

Te Waipounamu Trustee Candidates

THOMAS, Joseph

Tena koutou katoa

Ko Pipitarawai toku maunga
Ko Mangatakarewa toku awa
Ko Wharekauri toku moana
Ko Rangimatawai toku waka
Ko Pa Tangaroa toku marae
Ko Ngati Mutunga toku Iwi
Ko nga Smith me nga Tamati (Thomas) oku whanau
Ko Joseph Thomas ahau.

No reira, tena koutou, tena koutou, tena tatau katoa

I am humbled to be nominated for the next election of the Ngati Mutunga O Wharekauri Iwi Trust for Te Waipounamu region. Ngati Mutunga have many opportunities going forward and it will be a matter of prioritising these, ensuring proper process and achieving the best possible outcomes for all who whakapapa back to Ngati Mutunga o Wharekauri. That is the only agenda I have in agreeing to be nominated.

If elected I would bring a very sound knowledge of matters relating to Ngati Mutunga and Wharekauri. I am currently the Chair of the Ngati Mutunga O Wharekauri Asset Holding Company and have been a director of this company for over three years. I would not be conflicted in this role as there is a requirement to have Iwi Trust board members on the Asset Holding Company board. I would also bring over 20 years of experience in governance and senior management.



Please turn over >>

Reviewing and setting a clear strategic pathway for Ngati Mutunga is a key priority. This would set in place the direction for: engaging with and caring for our elders, enhancing our membership, respecting our membership records, ensuring timely and informative communication with members.
(abridged)

TUUTA, Steve

Tēnā Koutou Katoa.

My name is Steve Tuuta. I was born and raised in Wharekauri and I have strong whakapāpā links to Ngāti Mutunga o Wharekauri. I live in Christchurch. Te Waipounamu is home to many of our iwi and it is important that they are represented well.



I have maintained a strong interest in my iwi over the years with concern and enthusiasm in the pursuit of justice of our people. In particular, the injustices of the past in keeping with the Iwi Trusts' deed in the best interests of the beneficiaries.

I understand the obligations and duties of being a trustee. The assets held are for the benefit of our beneficiaries (the people). The people are why we are here. Any decision or undertaking that the iwi trust makes must be in the best interests of our people.

This is a very important time for us as Ngāti Mutunga o Wharekauri. It is important that the correct structures are in place with the correct people to lead this. We need to create capable governance for us to develop for the future and the preparation for this starts now. As an iwi in a pre-settlement phase, we need clear decision makers and sound accountability to the people. We need a strong a communication model that reaches all our people, no matter where they reside. I will make this happen.

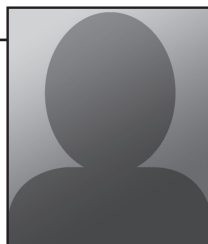
I believe I can successfully represent you all as the Te Waipounamu Trustee.

Nāku noa, nā

TUUTA-RUREHE, Mark-Shane

From this pinnacle we over look thus wind swept sand we root ourselves firmly taken by this homeland.

Ngati Mutunga is at this pinnacle surrounded by waters mirrored by what we put into which in sowing opportunities to harvest.



What excitement we have to follow these days that Ngati Mutunga now finds.

Empowering people to make a difference taking a stand believing in a future with Ngati Mutunga o Wharekauri.

Tihei Mauri Ora

One breath new life